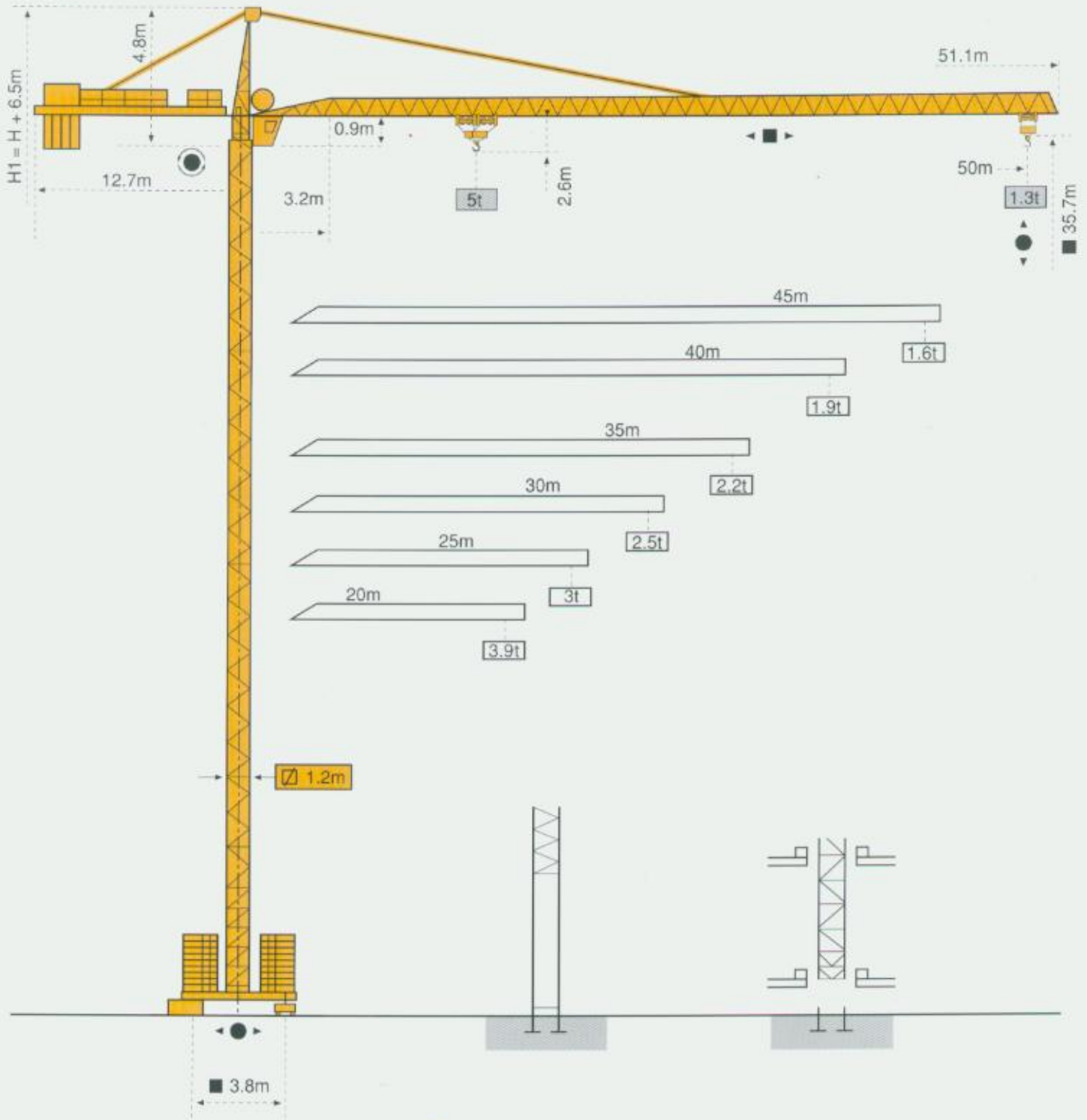


MCI 85A



Masts / Reactions

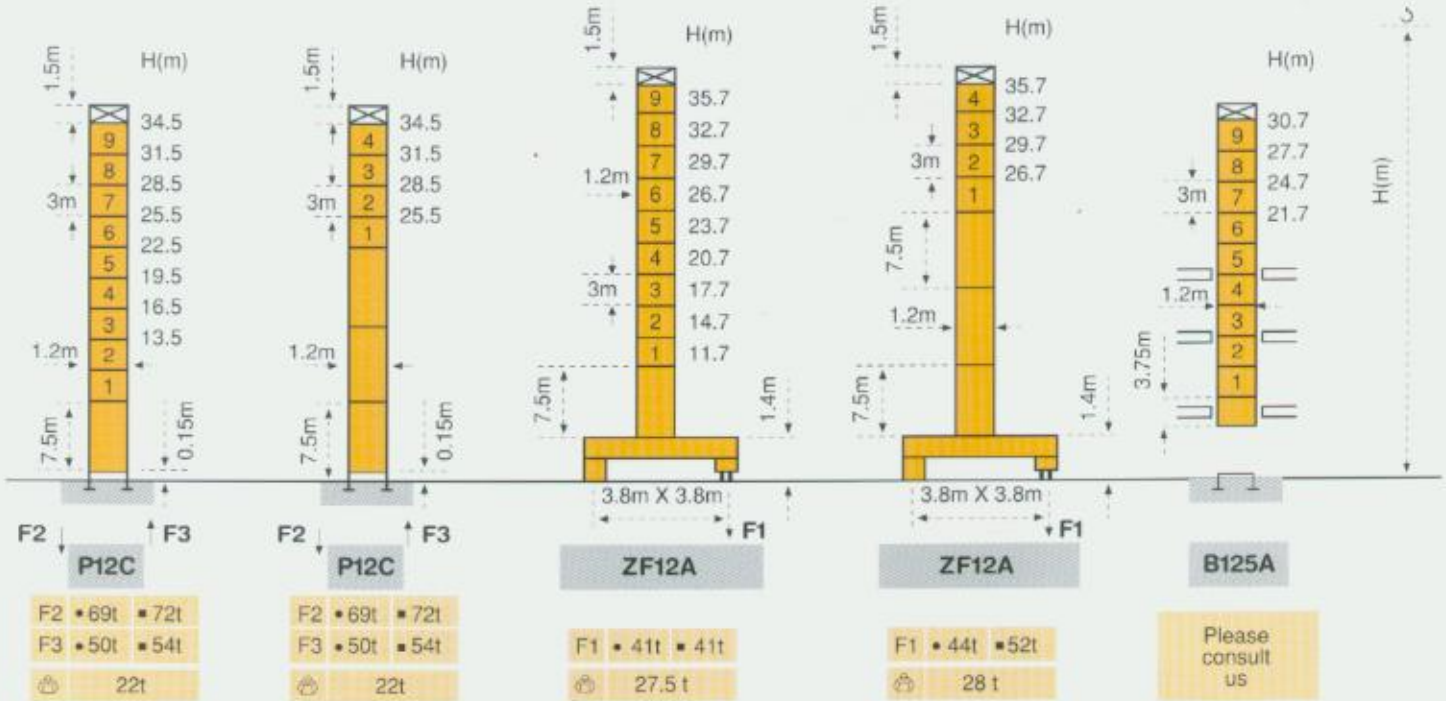
Masts



1.2m

Jib

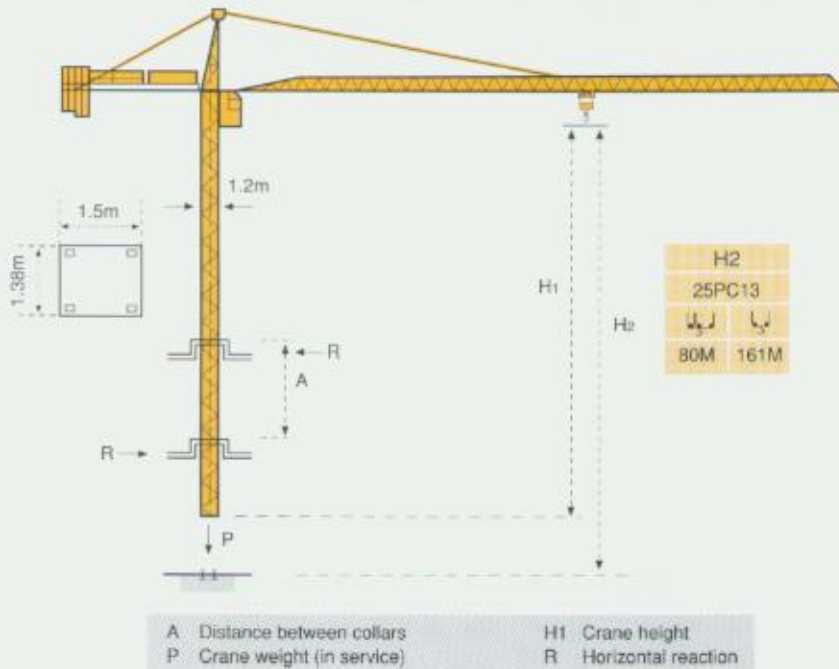
20m \Rightarrow 50m



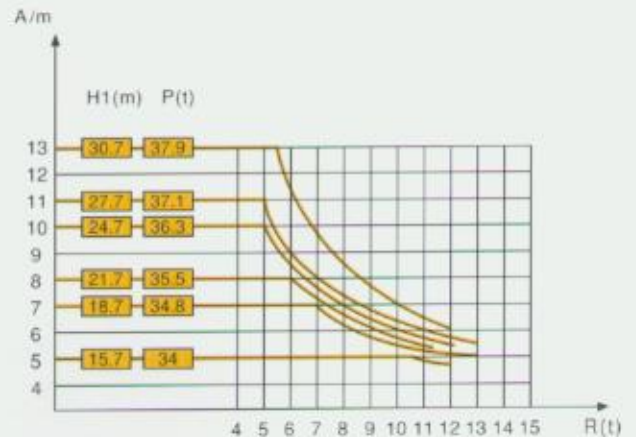
F = Reactions

- In service
- Out of service
- ⊕ Without load and ballast with longest jib and maximum height

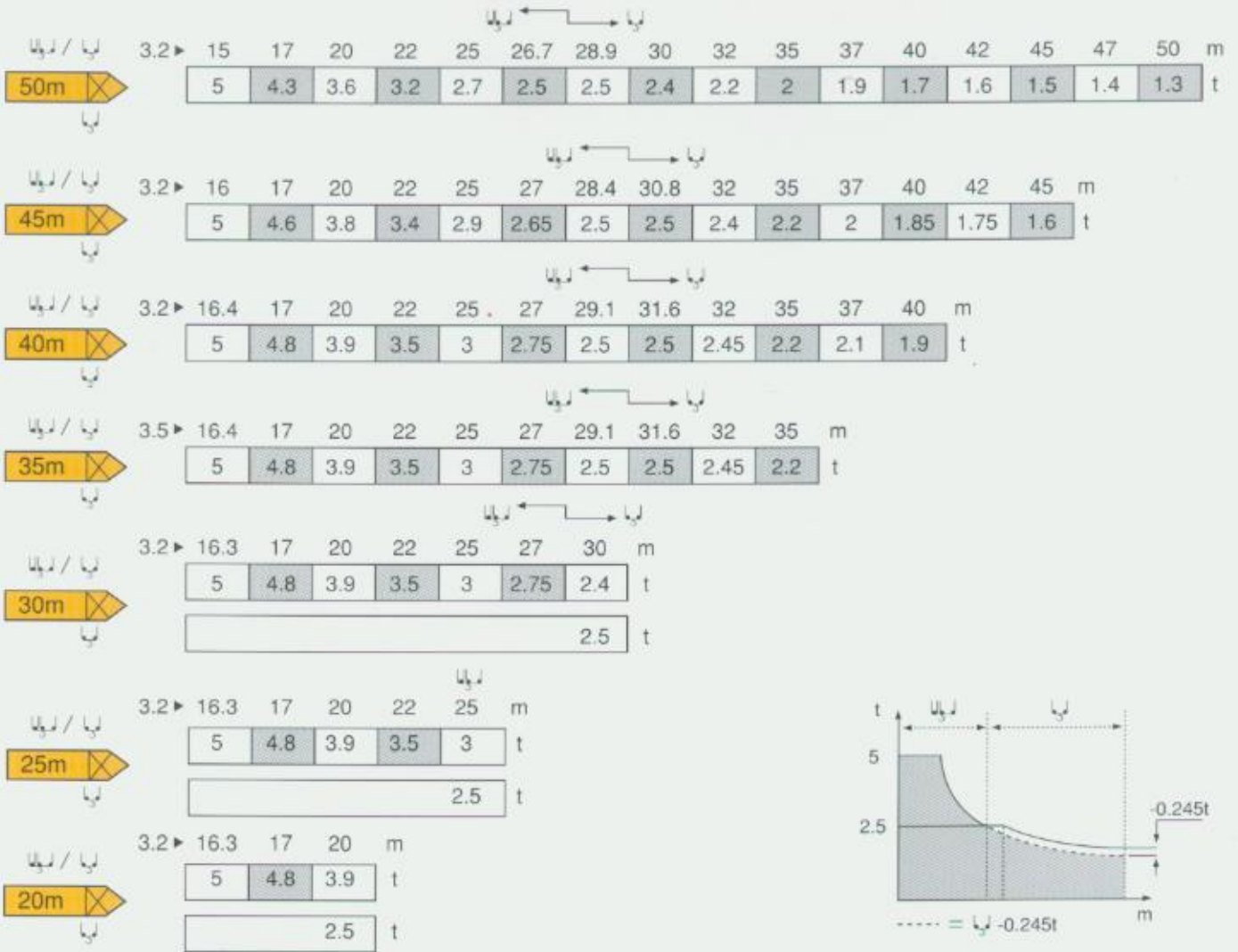
Climbing crane



B125A

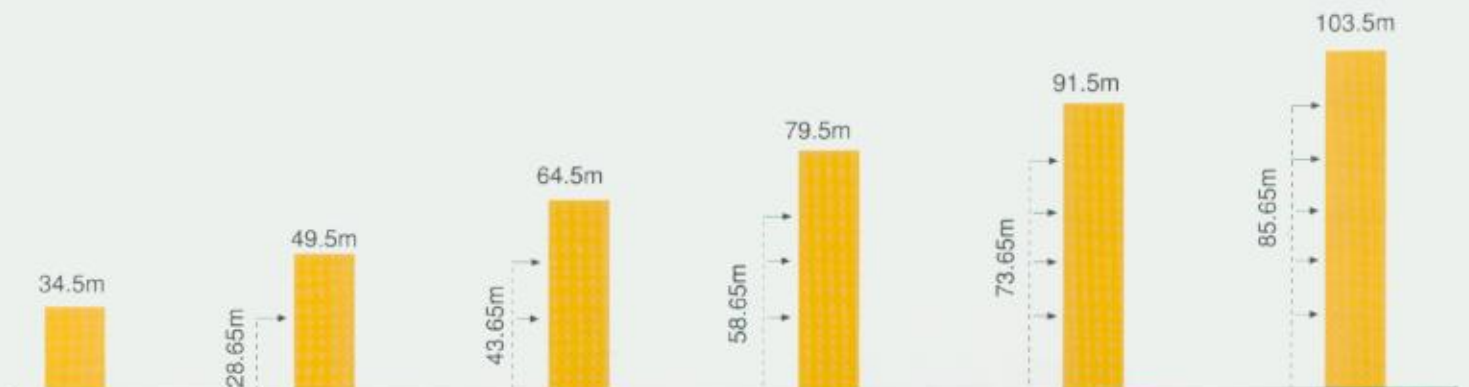


Load diagrams









Anchorage

P12C



Mechanisms

		m/min	t	m/min	t	ch-Ps hp	kW	
Hoisting	 25 PC 13	U ↑		UJ ↑		25	18.4	322m
		6.6	2.5	3.3	5			
		33	2.5	16.5	5			
		66	1.3	33	2.6			
Trolleying	 4 D3 V3	15 ⇒ 30 ⇒ 58 m/min				4	3	
Slewing	 RCV 80	0 ⇒ 0.8 tr/min (rpm)				8	5	
Travelling	ZF  TVD 324	26 m/min				2 X 4	2 X 2.9	
CEI 38  IEC 38		kVA				Generator set		
400V (+6% - 10%) 50Hz		25 PC : 40 kVA				*		

* Please consult us.

Subject to Modification. This commercial document is not legally binding. For any technical information, please refer to the corresponding instructions.



GROVE

POTAIN 

Manitowoc Crane Group Asia Pte Ltd
Manitowoc Crane Group

26 Benoi Road
Singapore 629 898
Tel: 65-6861 7133
Fax (Admin/Sales) : 65-6862 4040
Fax (Service/Parts): 65-6862 4142
www.manitowoccrane.com

Copyright. © POTAIN 2004

MCi 85A

Ref: 2004.01